

MONOCRYSTALLINE HEE215M 260 Watt

The solar module HEE215M is manufactured with high efficiency cells made by industry leading suppliers to guarantee a long lasting reliable power output. Robots allocate the 3 Bus Bar monocrystalline cells equally and interconnect the ribbon efficiently. The lightly textured glass of great optical transmission and diffused light collection covers the homogenous colored cells to create an esthetic module layout of high performance and quality design. The double reinforced anodized aluminum frame makes a rigid structure and flexible handling ideal for residential, commercial rooftop or ground mounted installations.



15%

HIGH EFFICIENCY



3 bus bar

3 BUS BAR



LIGHTLY TEXTURED GLASS



PYRAMIDAL GLASS (optional)



4mm

4 mm GLASS (optional)



WARRANTY
12 years

12 YEAR WARRANTY



FULL BLACK (optional)



IP65

RESISTANCE TO ICE AND SNOW



LOW IRRADIATION CONDITION



60 CELLS



1.20 m

1.20 m CABLE



5,400 Pa

5.400 Pa LOADING CAPACITY



HIGH POWER OUTPUT

- 240-260 Wp. Wide range of output
- Homogeneous esthetics
- Maximum reliability

DIMENSIONS

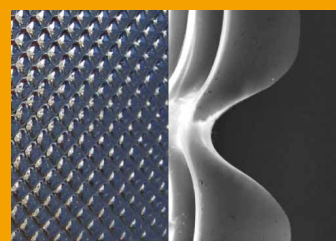
Length x Width: 1680 x 990 mm

Thickness: 40mm

Weight: 22 kg

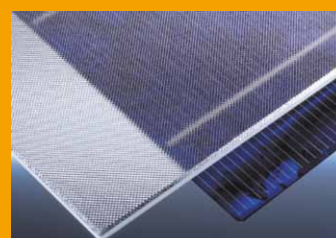
BIPV

Built in roof mounting systems providing maximum sealing.



PYRAMIDAL GLASS

The pyramidal structure of solar glass ensures high production at low radiation conditions and reduces the reflection of incident light. At vertical installation the annual energy output is increased by 10%.



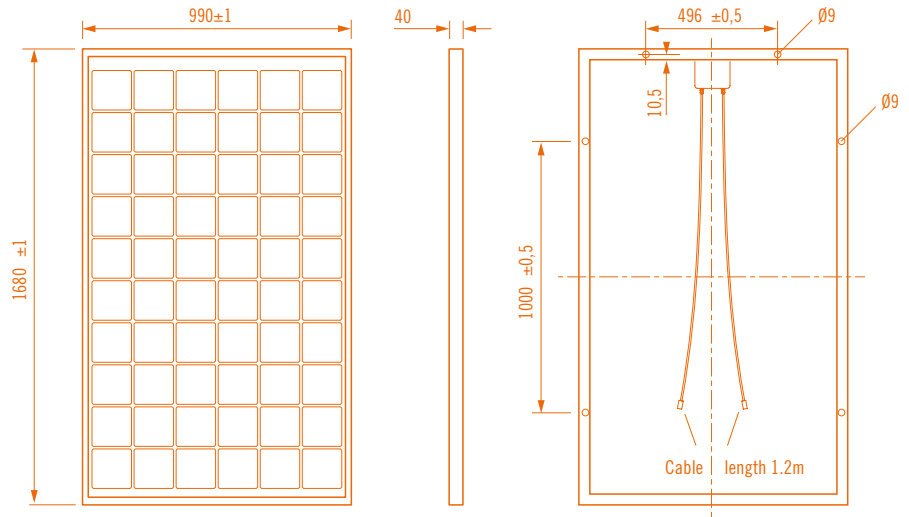
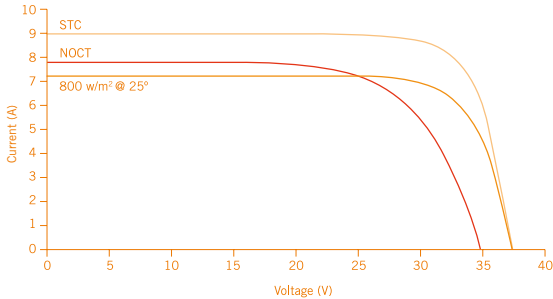
TEXTURED GLASS

We use the lightly textured glass as our standard, which provides better properties on heat dissipation and reflection loss in comparison to plain usual solar glass.

SOLAR MODULE

HEE215M

260 Watt



	HEE215MA70	HEE215MA69	HEE215MA68	HEE215MA67	HEE215MA66
POWER	260	255	250	245	240

STC (Standard Test Conditions)

Nominal power P_{MPP} (W)	260	255	250	245	240
Nominal voltage U_{MPP} (V)	30.84	30.65	30.3	30.03	30
Nominal current I_{MPP} (A)	8.46	8.32	8.22	8.18	8
Open circuit voltage V_{OC} (V)	37.73	37.5	37.4	37.26	36.8
Short circuit current I_{SC} (A)	8.9	8.86	8.72	8.71	8.7

STC: Irradiation 1000W/m² – Air mass AM 1.5 – Cell temperature 25°C

NOCT (Normal Operation Cell Temperature)

Nominal power P_{MPP} (W)	190	186	183	179	175
Nominal voltage U_{MPP} (V)	27.77	27.6	27.3	27.1	27
Nominal current I_{MPP} (A)	6.84	6.74	6.7	6.6	6.5
Open circuit voltage V_{OC} (V)	34.9	34.6	34.5	34.4	34.3
Short circuit current I_{SC} (A)	7.32	7.28	7.25	7.2	7.15

NOCT: Cell temperature (= 45°C) – Irradiation 800 W/m² – Wind speed 1m/s – Temperature 20°C

ELECTRICAL AND THERMAL CHARACTERISTICS

System tension (V): 1000	Temp. Coeff. V_{OC} (%/°C) -0.34	Temp. Coeff. P_{MPP} (%/°C) -0.43
Reverse current (A): 12	Temp. Coeff. I_{SC} (%/°C) +0.07	Operating Temp. -40 till +85 °C

MECHANICAL FEATURES

Cells	60 in series, 3BB, 6"
Glass	Lightly textured, high transparency, anti-reflective, hardened
Back sheet	Multi-layer lamination PVF and PET
Frame	Anodized aluminium in standard module / BIPV assembling
Connection	2x1.2m of cable, MC4 type connectors
Junction box	Protection index IP65, 3 diodes by-pass

MEASURING TOLERANCES Pmax: +/-3%

Warranty: 12 years on manufacturing defects and 80% nominal power at 25 years



Specifications are subject to change without notice. HELIOS ENERGY EUROPE S.L. (HELIENE) 09/2012

HELIOS ENERGY EUROPE S.L.

Worldwide Headquarters

Pza. del Xarol, 13-15
Pol. Ind. Les Guixeres
08915 BADALONA (Barcelona)
SPAIN
PH. +34 93 313 61 62
info@heliosenergy.es
www.heliosenergy.es

HELIENE Inc

Manufacturing and Sales

520 Allen's Side Rd
Sault Ste. Marie, ON
CANADA
www.heliene.ca

HELIOS USA

Manufacturing and Sales

1301 W Canal St.
Milwaukee, WI 53233
USA
www.helios-usa.com

HELIENE BENELUX

Sales and Distribution

Industrieweg 7
2641RM Pijnacker
NEDERLAND
www.heliene.nl

HELIENE FRANCIA

Manufacturing and Sales

Pza. Xarol, 13-15
Pol. Ind. Les Guixeres
08915 Badalona (Barcelona)
SPAIN
PH. +34 933136162
info@heliosenergy.es
www.heliosenergy.es

BAES

Sales and Distribution

Block-D, Road 31,
House-20, Shahjalal Upashahar
Sylhet-3100, Bangladesh
PH. 0821-712848
www.baes-ltd.com