

MONOCRYSTALLINE HEE215M Full Black 260 Watt

The solar module HEE215M Full Black is manufactured with high efficiency cells made by industry leading suppliers to guarantee a long lasting reliable power output. Robots allocate the 3 Bus Bar monocrystalline cells equally and interconnect the ribbon efficiently. The lightly textured glass of great optical transmission and diffused light collection covers the homogenous colored cells to create an esthetic module layout of high performance and quality design. The double reinforced anodized aluminum frame makes a rigid structure and flexible handling ideal for residential, commercial rooftop or ground mounted installations.



**HIGH
EFFICIENCY**



**FULL BLACK
(optional)**



3 BUS BAR



**RESISTANCE TO
ICE AND SNOW**



**LIGHTLY
TEXTURED GLASS**



**LOW IRRADIATION
CONDITION**



**PYRAMIDAL
GLASS (optional)**



60 CELLS



**4 mm GLASS
(optional)**



1.20 m CABLE



**12 YEAR
WARRANTY**



**5.400 Pa
LOADING CAPACITY**



HIGH POWER OUTPUT

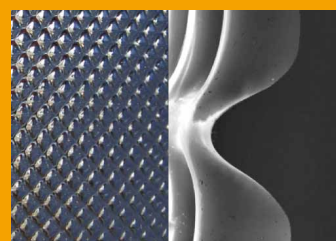
- 240-260 Wp. Wide range of output
- Homogeneous esthetics
- Maximum reliability

DIMENSIONS

Length x Width: 1680 x 990 mm
Thickness: 40mm
Weight: 22 kg

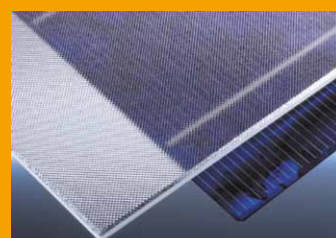
BIPV

Built in roof mounting systems providing maximum sealing.



PYRAMIDAL GLASS

The pyramidal structure of solar glass ensures high production at low radiation conditions and reduces the reflection of incident light. At vertical installation the annual energy output is increased by 10%.



LIGHTLY TEXTURED GLASS

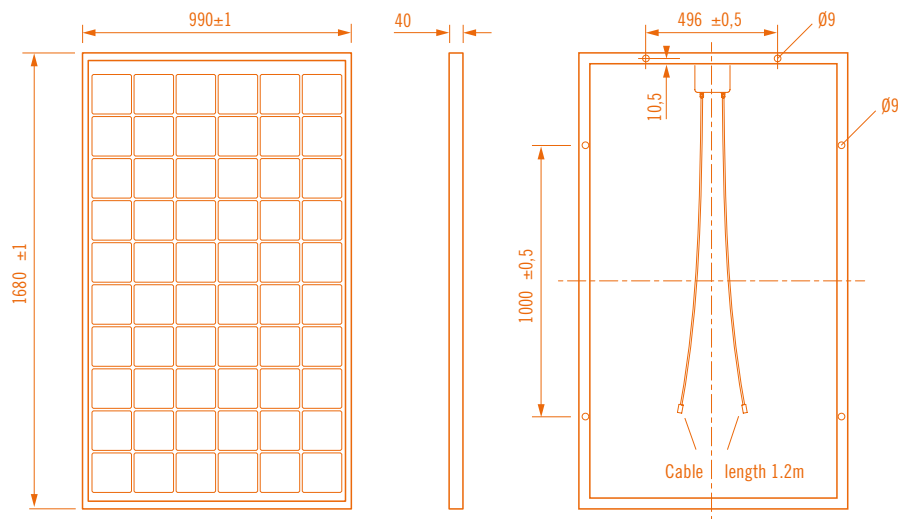
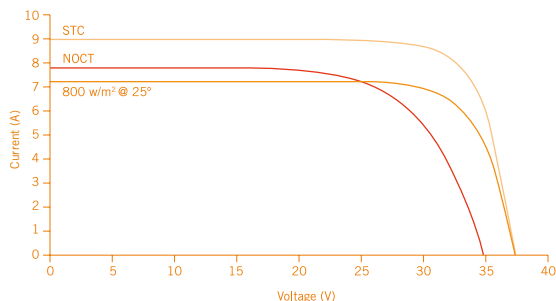
We use the lightly textured glass as our standard, which provides better properties on heat dissipation and reflection loss in comparison to plain usual solar glass.

SOLAR MODULE

HEE215M

Full Black

260 Watt



	HEE215MA69	HEE215MA68	HEE215MA67	HEE215MA66
POWER	255	250	245	240

STC (Standard Test Conditions)

Nominal power P_{MPP} (W)	255	250	245	240
Nominal voltage U_{MPP} (V)	30.65	30.3	30.03	30
Nominal current I_{MPP} (A)	8.32	8.22	8.18	8
Open circuit voltage V_{OC} (V)	37.5	37.4	37.26	36.8
Short circuit current I_{SC} (A)	8.86	8.72	8.71	8.7

STC: Irradiation 1000W/m² – Air mass AM 1.5 – Cell temperature 25°C

NOCT (Normal Operation Cell Temperature)

Nominal power P_{MPP} (W)	186	183	179	175
Nominal voltage U_{MPP} (V)	27.6	27.3	27.1	27
Nominal current I_{MPP} (A)	6.74	6.7	6.6	6.5
Open circuit voltage V_{OC} (V)	34.6	34.5	34.4	34.3
Short circuit current I_{SC} (A)	7.28	7.25	7.2	7.15

NOCT: Cell temperature in normal condition (= 45°) with Irradiation 800 W/m² – environmental temperature 20°C – Wind speed 1m/s.

ELECTRICAL AND THERMAL CHARACTERISTICS

System tension (V): 1000	Temp. Coeff. V_{OC} (%/°C) -0.34	Temp. Coeff. P_{MPP} (%/°C) -0.43
Reverse current (A): 12	Temp. Coeff. I_{SC} (%/°C) +0.07	Operating temperature -40 till +85 °C

MECHANICAL FEATURES

Cells	60 in series, 3BB, 6"
Glass	Lightly textured, high transparency, anti-reflective, hardened
Back sheet	Multi-layer lamination PVF and PET
Frame	Anodized aluminum in standard module / BIPV assembling
Connection	2x1.2m of cable, MC4 type connectors
Junction box	Protection index IP65, 3 diodes by-pass

MEASURING TOLERANCES P_{max} : +/-3%

Warranty: 12 years on manufacturing defects and 80% nominal power at 25 years



Specifications are subject to change without notice. HELIOS ENERGY EUROPE S.L. (HELIENE) 09/2012

HELIOS ENERGY EUROPE S.L.

Worldwide Headquarters

Pza. del Xarol, 13-15
Pol. Ind. Les Guixeres
08915 BADALONA (Barcelona)
SPAIN
PH. +34 93 313 61 62
info@heliosenergy.es
www.heliosenergy.es

HELIENE Inc

Manufacturing and Sales

520 Allen's Side Rd
Sault Ste. Marie, ON
CANADA
www.heliene.ca

HELIOS USA

Manufacturing and Sales

1301 W Canal St.
Milwaukee, WI 53233
USA
www.helios-usa.com

HELIENE BENELUX

Sales and Distribution

Industrieweg 7
2641RM Pijnacker
NEDERLAND
www.heliene.nl

HELIENE FRANCIA

Manufacturing and Sales

Pza. Xarol, 13-15
Pol. Ind. Les Guixeres
08915 Badalona (Barcelona)
SPAIN
PH. +34 933136162
info@heliosenergy.es
www.heliosenergy.es

BAES

Sales and Distribution

Block-D, Road 31,
House-20, Shahjalal Upashahar
Sylhet-3100, Bangladesh
PH. 0821-712848
www.baes-ltd.com