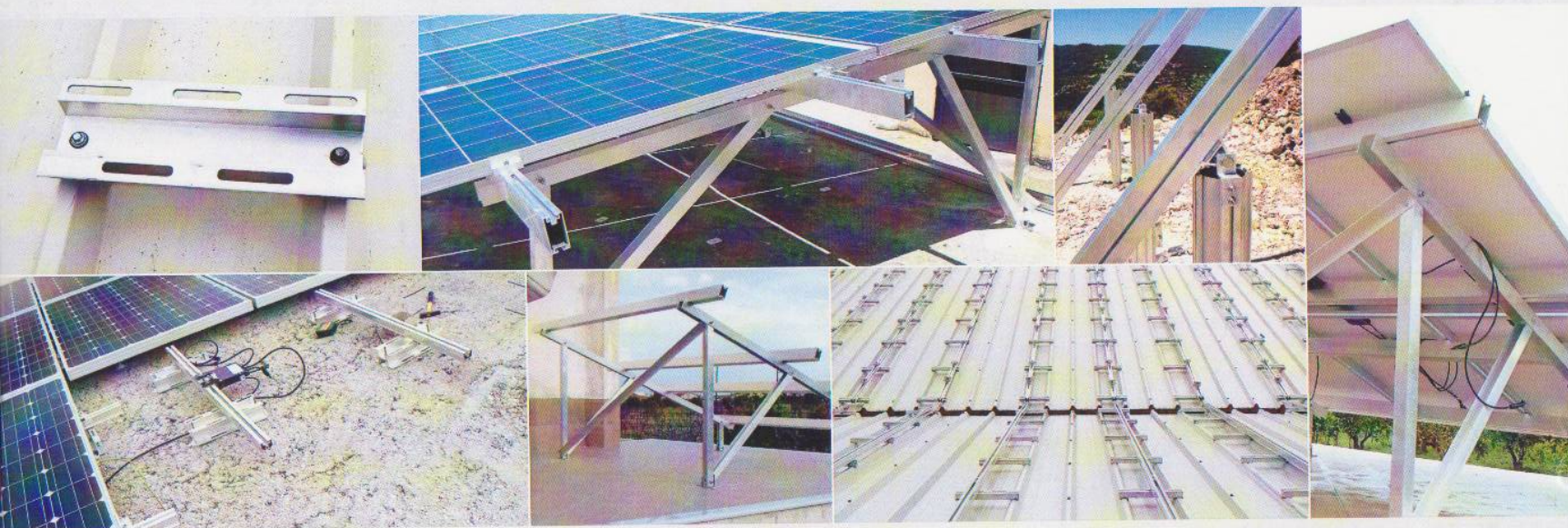


# **pV** *Mounting.gr*

ΣΥΣΤΗΜΑΤΑ ΣΤΗΡΙΞΗΣ ΦΩΤΟΒΟΛΤΑΪΚΩΝ



*Mounting your profits*





**pv/Mounting.gr**  
ΣΥΣΤΗΜΑΤΑ ΣΤΗΡΙΞΗΣ ΦΩΤΟΒΟΛΤΑΪΚΩΝ



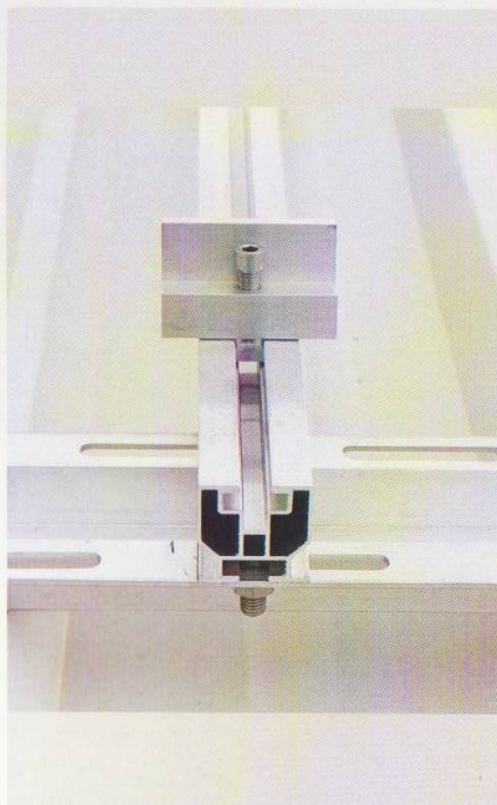
# Πεδία Εφαρμογής Συστημάτων Βάσεων Στήριξης

Areas of application  
of Photovoltaic Mounting Systems

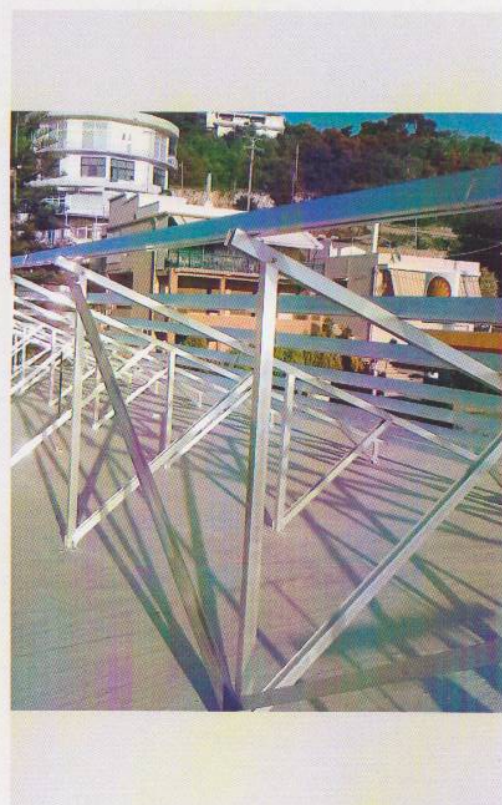
Αγροτεμάχια  
Plots



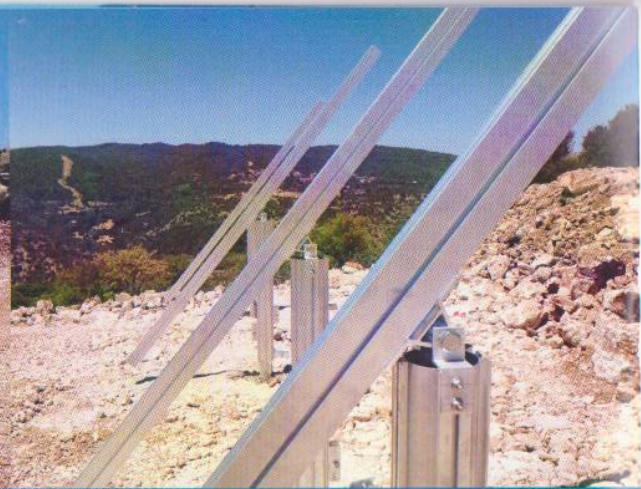
Βιομηχανικές Στέγες  
Industrial Roofs



Στέγες Κατοικιών  
House Roofs







- ▶ Easy to assemble, fast installation.
- ▶ Ergonomic transfer as pieces interlock with each other and arrive on bundled.
- ▶ Adaptation of structures according to your needs and requirements of the project.
- ▶ Can be installed on plots, industrial roofs and houses.
- ▶ Ability to service large orders in a short time due to automated production line using high technology CNC machines.
- ▶ Stocky structure as we use aluminium intersection of 5mm (fields) and 3mm (houses).





Our company, active in the field of aluminium more than 20 years and with extensive experience in construction, by following the needs of the time joined the photovoltaic bases area. With main target to meet the needs of the professional installer, utilizing our experience and the latest machines on the market, we developed our own module support system.

Profiles and components of the system are able to accept any form of panels at any dimension: monocrystalline, polycrystalline or Thin Film.

Along with residential construction systems, we developed field bases, with single or dual spile, fixed or variable slope, providing a comprehensive proposal for every need.

The construction of the bases and all of its parts takes place in our factory.

Our mounting systems come in accordance with the requirements of the following regulations:

EC9 P1 for the study of the elements aluminum, EC1 P1.4 preEN 1991-1-4: Jan 2004 for the calculations the wind pressure, EC1 - EN1991-1-3: 2003 for snow load calculations, EC8: the stability against earthquake and is certified by TUV HELLAS (TUV-H 12/8150).

The construction material is aluminium AlMgSi 0.5 (F 22), a material known for its resistance to time under adverse conditions. With the combination of stainless steel screws (A2) and rubber tape, creates the conditions to avoid oxidation.

Raised bases and tables, in any order, horizontally or vertically, at any slope, are our principal activities.

*All this coupled with unbeatable prices.*





2<sup>nd</sup> km. of  
Varis - Koropiou Ave.  
T.K. 19400, Koropi  
e-mail: [exaltheco@yahoo.gr](mailto:exaltheco@yahoo.gr)  
tel / fax: 210 9653270  
mob: 6947070916

**pvMounting.gr**  
ΣΥΣΤΗΜΑΤΑ ΣΤΗΡΙΞΗΣ ΦΩΤΟΒΟΛΤΑΪΚΩΝ